



# Family Matters

Maui Family Support Services, Inc.

## Welcome

November 2013

### Table of Contents

Stand for Children . . . 2

New Partnership . . . 3

From CEO . . . . . 3

2013 Signature  
Event . . . . . 4

EHS Report . . . . . 6

Demographics . . . . 10

Maui Family Support Services, Inc. (MFSS) welcomes our new board members this fiscal year. **Barbara Tanner** is a former contractor as the Health Specialist of the Early Head Start and retired employee of MFSS. **Lisa Pahoukoa** is a Educational Coordinator in Community-Based Early Childhood Education for Kamehameha School. And **Lisa Judge** is a Real Estate Broker for the Wailea Group. We are excited with what these new members can bring!

### *From Board President, Dr. Michael E. Kim*



I thought I'd do a doctor thing this year. It still pertains to helping families and to protect our little ones. There are not many people alive today that lived through the 1918 influenza (Flu) epidemic. In fact, a lot of people of all ages back then didn't live through it. Worldwide, that flu infected an estimated 500 million people, of which 50-100 million died. An estimated 675,000 Americans died from the flu then, more than 10 times the number of American deaths from the World War.

Even our yearly seasonal flu infects millions of people worldwide each year with 250,000 to 500,000 deaths. Studies in the later 1990s in the United States showed an average of 226,000 hospitalizations and 36,000 deaths a year.

While it's not 100% effective, the good news is that the best way to prevent the flu is to get vaccinated. It's pretty safe, and way safer compared to the disease described above. I got mine the first day it was available. **If you haven't gotten it yet, consider it.**

Support your family, and **thanks for supporting MFSS.**



Maui United Way





# 18th Annual Stand for Children Rally & Celebration

Mahalo to the following partner agencies and entertainers in joining us celebrate the children of Maui County.

Maui Police Department

Maui Fire Department

Maui Women, Infants & Children (WIC)

Friends of the Children's Justice Center

MEO Head Start

University of Hawaii, Dental Program

Preschool of Kamehameha School

Alu Like Inc.

Maui Clinic Planned Parenthood

Partners in Development Foundation

Good Beginnings Maui

Early Head Start - Home Based

Early Head Start - Center Based

Enhanced Healthy Start

Healthy Start Home Visiting

Healthy Start Early Identification

Teen Voices

Fatherhood Involvement Team

Raising Our Keiki's Keiki





## *New Partnerships . . . .*

Maui Family Support Services, Inc., in partnership with Iao School, was awarded a three year grant to provide the Connecting for Success program. Hawaii Community Foundation will fund the program with the goal to strengthen the capacity and efforts of Hawaii's public middle and intermediate schools to identify, support, and focus services on students most at-risk of dropping out of school.

The MFSS staff work closely with 'Iao School faculty to coordinate, provide and evaluate the services to identified 90 students. 'Iao School and MFSS partnership will promote "the belief by students that adults and peers in school care about learning and about them as individuals." The program will use evidence-based Success Highway© programming, including assessment and curriculum.

Funding will allow Teachers to participate in professional development for continuous learning in Classroom Management, and working effectively with at-risk students. The Leadership Team, comprised of 'Iao School and MFSS staff members, will meet regularly to review, evaluate and coordinate.

Funding also allowed project staff to attend the National Prevention Dropout Conference in Atlanta, GA in hopes to be useful for the program.



This year has been challenging for Maui Family Support Services. Due to funding cuts and tightened budgets, we had to be very creative in budgeting to ensure that we are still able to provide much-needed services to the families in Maui County. We are excited with the new collaborations between MFSS, Iao School and Hawaii Community Foundation. Even more ecstatic with new partnerships from different funding sources and the new opportunities that are sure to be just around the corner.

We are grateful for all the overwhelming support from the community, our friends and families, and our partnerships. Your support encourages the great work our staff do for Maui County, the families and keikis we serve.

Thank you for your continued support and belief in our mission as we **celebrate 33 years of family strengthening and child abuse prevention in Maui County.**

*Jani*

L. Jani Sheppard  
Chief Executive Officer





*Thank you* to our sponsors, donors, and supporters from the Board Members and staff of Maui Family Support Services, Inc. and from the children and families we serve in making a successful *2013 Annual Signature Event "Up, Up & Away."*

## SPONSORS

Mark & Debi Roling Charitable Foundation

Commercial Properties of Maui

First Hawaiian Bank

L. Jani Sheppard and Mr. & Mrs. Tom & Marlene Jones

Hank of Hawaii





# 2013 Annual Signature Event "Up, Up & Away"

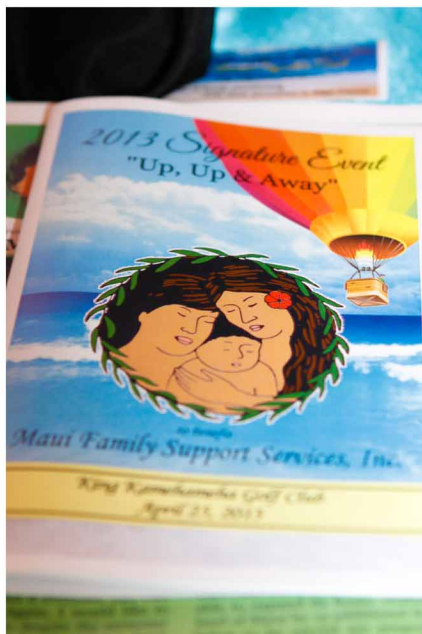
## SILENT AUCTION DONORS

A Perfect Look  
Affordable Furniture & Design  
Air Maui Helicopter Tours  
Alii Nui Sailing Charters  
Atlantis Submarines  
Bejo Elburki  
Blue Ginger  
Bounty Music  
Bubba Gump Shirmy Co.  
Chantelle Kanani Photography  
Costco Wholesale  
Curves  
Custom Metal Creations  
Darla Bonacorsi  
Earlee Gouveia  
Elleair Maui Golf Club  
Everything's Young & Rosie  
Expeditions  
Friends of MFSS  
Program Charters, Inc.  
GAP  
Grand Wailea Resort  
Green Room Organics

Green Ti Massage & Spa  
Habitat of Humanity  
Hard Rock Cafe  
Hina Mana Salon & Spa  
Hi-Tech Surf Sports  
Honu Seafood & Pizza  
Hoyaco/OfficeMax  
Hula Grill  
Island Honda  
Jewels of the White Tara  
Julie Galeeva Fine Art  
Julie Houck Studio  
Kaanapali Beach Hotel  
Kai Jewelry by Andrea  
Ka'ina Bonacorsi  
Kathi Jones Jewelry  
Kilohana Physical Therapy  
Kim Gayner  
Linda Shishido  
Little Tibet, Inc.  
MacNet  
Makawao Veterinary Clinic  
Makena Beach & Golf Resort

Mala Ocean Tavern  
Mama's Fish House  
Mana Foods  
Mark & Debi Roling  
Maui Ceramics  
Maui Classic Charters  
Maui Coffee Roasters  
Maui Divers Jewelry  
Maui Jim  
Maui Ocean Center  
Maui Oil Company  
Maui Specialty Chocolates  
Maui Wedding Cakes  
Maui Zipline  
Mauithing  
MFSS Enhanced HS Team  
MFSS FIT Program  
Monkeypod Kitchen  
Native Intelligence  
No Ka Oi Associates  
Old Lahaina Luau  
Pacific Jet Sports, Inc.  
Pacific Whale Foundation

Pacific'o and I'o Restaurant  
Picture a Tale  
Piholo Ranch Zipline  
Pretty Cut N Dry  
Proflyght Hawai'i  
Pukalani Country Club  
Roundtable Pizza  
Ruth's Chris Steak House  
Sam Sato's Inc.  
Seatreasures  
Serpico's Maui LLC  
Shane Victorio Foundation  
Simply Soul Maui  
Sir Wilfred's  
Skyline Eco Adventures  
Tasty Crust Restaurant  
The Curtis Wilson Cost Gallery  
The Fairmont Kea Lani  
The Mind's Eye Interiors  
UFO Parasail  
Ulalena  
Vegas Hair  
Warren & Annabelle's Magic



## SPECIAL THANKS

SLAM  
Tane Haili  
Jason Porta  
Pictures Plus

Staff of MFSS  
Al Ostermiller  
Joanne Magliba  
Chantelle Alviso

Design by D.E.M.  
Ka'ina Bonacorsi  
Bayada Habilitation  
Maui's Quality Dry Cleaning



**Early Head Start-Annual Report  
August 1, 2012 – July 31, 2013**

**Total Amount of Public and Private Funds**

**Amount Received From:**

Public.....	\$1,334,641
Private.....	\$61,139
Donated Goods and Services.....	\$199,371
<b>Total:</b>	<b>\$1,595,151</b>

**Amount from Source:**

US Dept. of Health & Human Services	\$1,276,121
County of Maui.....	\$58,519.66
State of Hawaii, Dept. of Education...	\$37,518.79
Hawaii Community Foundation.....	\$21,616.97
Maui United Way .....	\$32,361.26
S. Victorino Foundation .....	\$5,927.41
Weinberg CD Interest.....	\$1,233.37
<b>Total:</b>	<b>\$1,433,298</b>

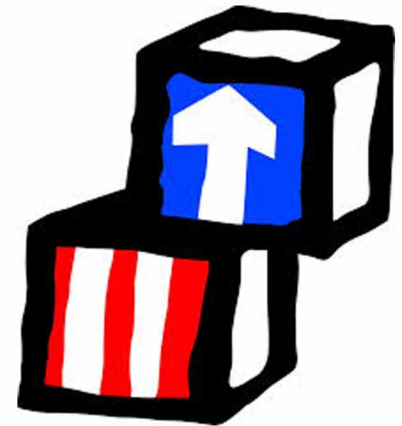
**Budgetary Expenditures**

Personnel .....	\$939,623
Payroll Taxes .....	\$99,943
Fringe Benefits .....	\$106,028
Equipment & Supplies .....	\$35,820
Contractual Services .....	\$16,587
Rent & Utilities .....	\$33,753
T & TA .....	\$40,881
Repair & Maintenance.....	\$47,115
Others .....	\$71,586
In-Kind: Space and Volunteers ...	\$203,815
<b>Total:</b>	<b>\$1,595,151</b>

**Proposed Budget**

**8/1/13 – July 31, 2014 Program Year**

Personnel .....	\$1,008,447
Fringe Benefits .....	\$127,210
Equipment & Supplies .....	\$22,187
Travel .....	\$1258
Contractual Services .....	\$19,007
Rent & Utilities .....	\$30,929
T & TA .....	\$30,881
Others .....	\$76,938
In-Kind: Space and Volunteers ...	\$184,423
<b>Proposed Budget Total:</b>	<b>\$1,501,280</b>



**Results of Most Recent Financial Audit**

- The audit for fiscal year 2013 (July 1, 2012 – June 30, 2013) is in progress.
- The most recent completed audit covered fiscal year 2012 (July 1, 2011-June 30, 2012) expressed an unqualified opinion with no findings.

**Services to Children and Families**

Number of Children Served..... 187                      Number of Families Served..... 167

**Percent of eligible children/pregnant women served 99%**

**Average Monthly Enrollment 100%**



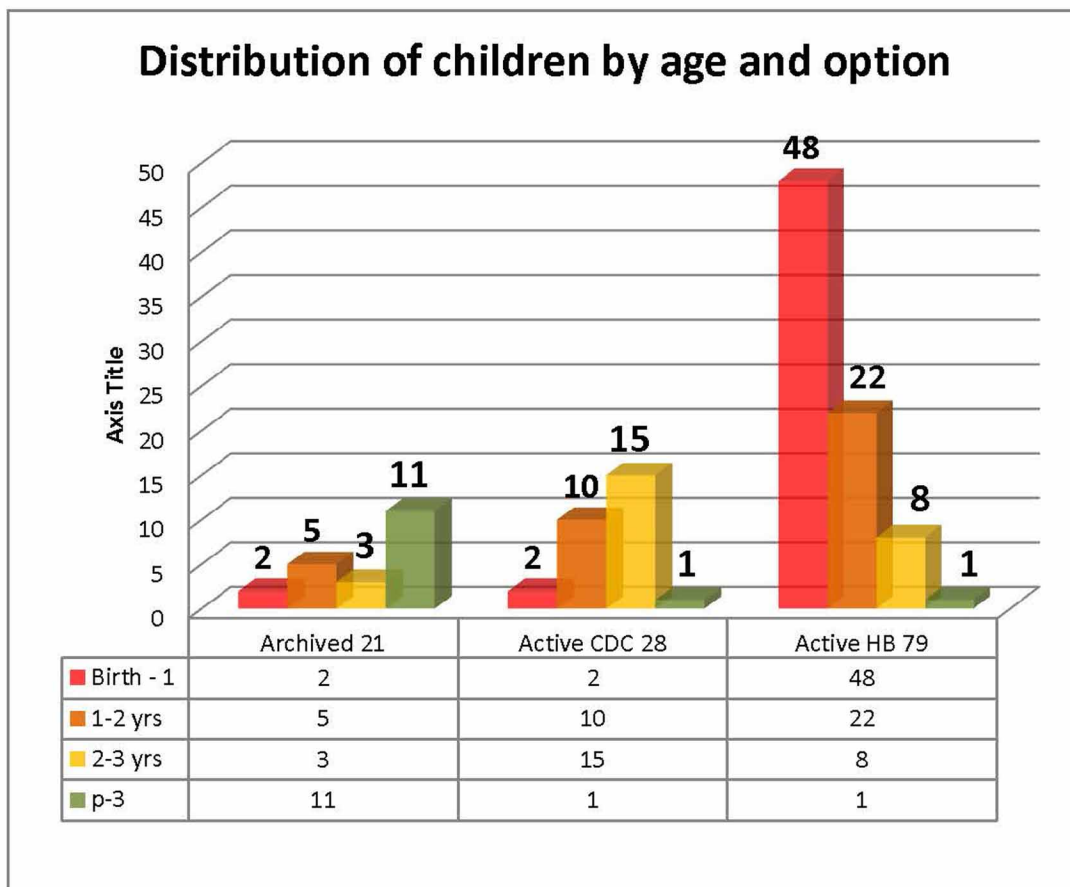


## Profile of Children

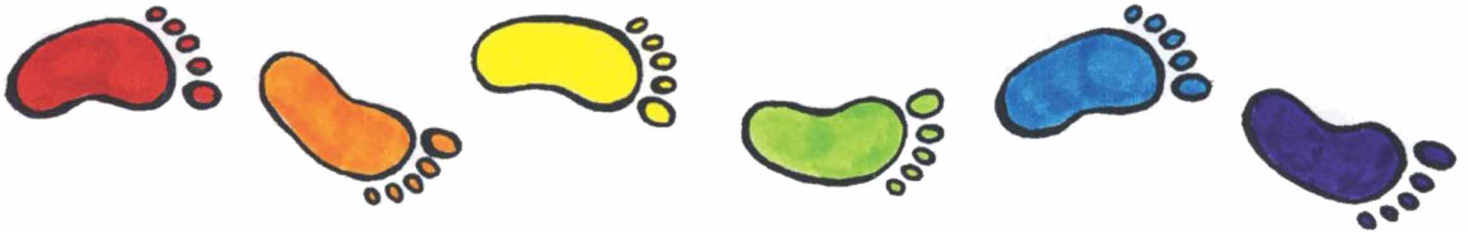
Following is the profile of the children served in the last trimester of this program year. The 128 children included

<b>Funding Source(s):</b>	Head Start: 124 MIECHV: 4	<b>Children With IFSP:</b> 12%	<b>Gender:</b> Male: 52% Female: 48%
<b>Race:</b>	Native Hawaiian: 1% Japanese: 1% Other Asian: 1% Thai: 1%	Filipino: 5% Some Other Race: 6% Black or African American: 2% Samoan: 2%	White: 6% Unknown: 5% Hawaiian: 23% Other Pacific Islander: 34% All other combinations: 14%
<b>Ethnicity:</b>	Not Spanish/Hispanic/Latino: 86% Unknown Hispanic: 2% Unknown: 8%	Mexican: 1% Costa Rican: 1% Tagalog: 2% Russian: 2%	Puerto Rican: 1% Other Hispanic: 1% Unknown: 2% Other: 29%
<b>Primary Language:</b>	English: 65% Spanish: 1%		

Children's Age and WHE color band	Child Count by Age		Archived	Active
	128		21	107
Birth to 1 year (coded Red):	52	40.6%	9.5%	46.7%
1 to 2 years (coded Orange):	37	29%	23.8%	29.9%
2 to 3 years (coded Yellow):	26	20%	14.3%	21.5%
Preschool 3 (coded Green):	13	10%	52.4%	1.9%



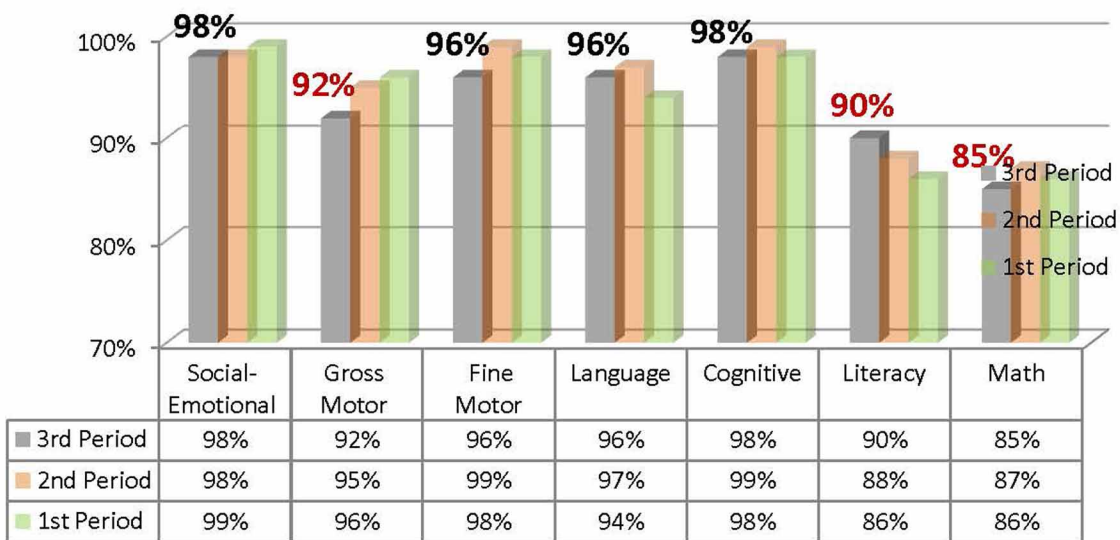




Teaching Strategies Gold (TSG) is an online assessment data system used to collect information from teachers and homevisitors on every child's learning and development progress. Each child is assessed in 6 areas -- Social Emotional, Physical (Gross Motor and Fine Motor), Language, Cognitive, Literacy, and Math. Widely Held Expectations (WHE) represent the typical age-range of development and learning in each area. The chart below shows the percentage of children who met or exceeded WHE over the last 3 periods. Each period is 4 months long beginning in July of 2012 and ending in August 2013.

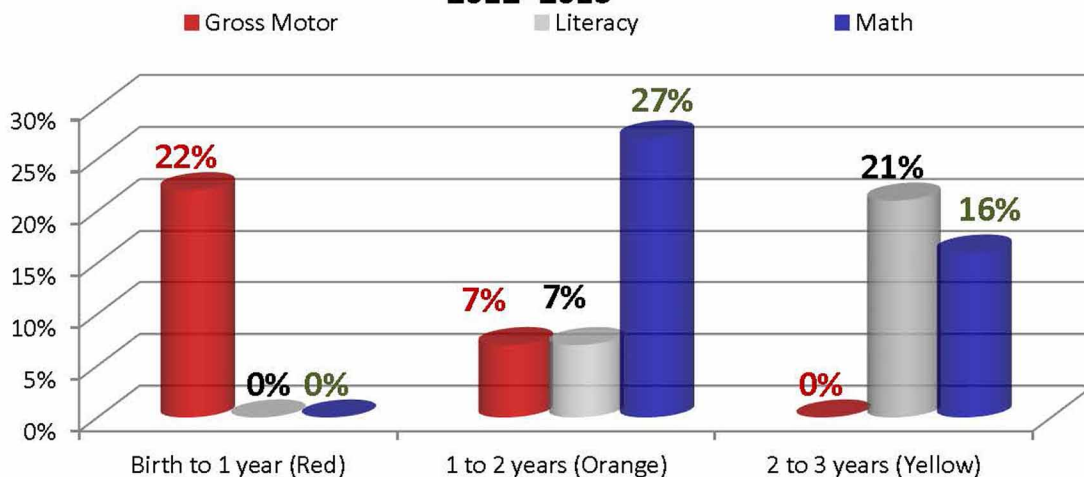
### MFSS EHS School Readiness Goal

At least 90% of program children will meet or exceed Teaching Strategies Gold Widely Held Expectations (WHE)



### Percentage of Children who Fell Below WHE (by Age)

2012=2013



# Over 5500 People Served in 2013

**99.55% of children served are NOT confirmed for abuse and neglect**

## **Outreach and Resource Specialist (OARS)**

Seen at Maui Memorial Medical Center . . . . . 1202  
Non-MMMC Interviews (referred by other sources) . . . . . 120

**Early Head Start Home and Center Based**  
187 Children Served  
12 Pregnant Women Served

### **Ethnicity**

Hispanic or Latino Origin . . . . . 3%  
Non-Hispanic/Latino Origin. . . . . 97%

### **Race**

Am. Ind/Alaska Native . . . . . 1%  
Asian . . . . . 14%  
African American . . . . . 3%  
Hawaiian/Pacific Islander . . . . . 74%  
White . . . . . 7%  
Biracial/Multiracial. . . . . 3%  
Other . . . . . 0%  
Unspecified . . . . . 0%

### **All Programs**

Children Identified with a Delay and referred to Part-C Provider . . . . . 45  
  
Individuals Who Received Services for Mental Health, Substance Abuse or Domestic Violence or other concerns . . . . . 164

### **Healthy Start**

192 Served  
Includes caregivers and children

### **Enhanced Healthy Start**

172 Served  
Includes caregivers and children

### **Teen - FIT - ROKK**

1154 Served  
Through groups, classes and outreaches

### **Demographics of Participants Served by above Programs**

Caucasion . . . . . 36%  
Hawaiian/Part Hawaiian/  
Other Pacific Islander . . . . . 37%  
Asian . . . . . 14%  
African American . . . . . 2%  
Aleutian/Native Am. Indian . . . . . 0%  
Hispanic . . . . . 4%  
Other . . . . . 8%

### **Good Beginnings**

#### **Maui County Child Care Subsidy**

Phone Intakes/Counseling/  
Referrals/Outreach Events/  
Utilized Lending Library . . . . . 1278  
Families Receiving Assistance with  
Childcare/Preschool . . . . . 98  
Parents/Caregivers Attending Workshops co-sponsored by Good Beginnings . . . . . 153