

2023



Annual Report

43 years of family
strengthening and
child abuse **prevention**
in Maui County



1980-2023



A Message from Our Board President

Michael Kim, MD - 35 Years with MFSS

Fires, housing, childcare, inflation, hurricanes, crime, Eastern Europe, the Middle East... reminds me of the 1970 Temptation's song "Ball of Confusion." We're living in a world of stressors.

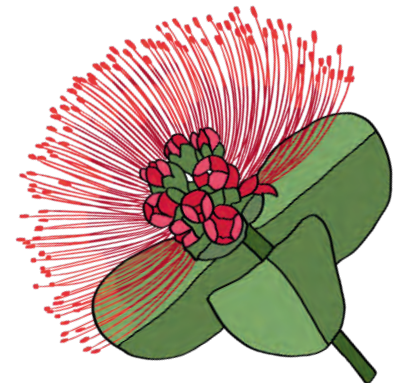
Fortunately, there are humans that are humane and believe in humanity. The Golden Rule. Pono. The recent response to the Maui fires with a local outpouring of empathy and assistance in the forms of sharing of time, space, and effort, donations, a shoulder/counselling, and many other virtues is testament to that. MFSS has willingly been a part of the effort and continues to provide supportive services to decrease the stressors and promote healthy family functioning.

Thank you again to all our staff, volunteers, Board members, funders, and Community partners for all the good that you do.

Reminds me of the 1972 Bill Withers's song "Lean on Me."
(OK, so I liked Soul when I went to Leilehua '72).

Mahalo,

Mike Kim



Our theme for this year's Annual Newsletter is Ho'omau, as we reflect on our agency's and communities' ability to persevere through COVID and the devastation of the August 2023 wild fires.

Cover art by Janessa Baguio-Larena, features the 'Ōhi'a Lehua plant. Associated with the fire goddess Pele, this plant has thick fire-resistant bark and can quickly re-sprout after fires. The spiral helix under the title was included as it is a symbol of perseverance.

**THE MISSION OF MAUI FAMILY
SUPPORT SERVICES, INC.
IS TO PROMOTE HEALTHY FAMILY
FUNCTIONING WHILE PROVIDING
SUPPORTIVE SERVICES WHICH BUILD
ON FAMILY STRENGTHS.**

**OUR PRIME DIRECTIVE IS TO UTILIZE
OUR COLLECTIVE RESOURCES TOWARD
THE PREVENTION OF CHILD ABUSE AND
NEGLECT.**



A Message from Our Chief Executive Officer

Edeluisa Baguio-Larena - 22 Years with MFSS

“The human capacity for burden is like bamboo – far more flexible than you’d ever believe at first glance.”
– Jodi Picoult, *My Sister’s Keeper*

These words speak to me these days as I watch our community surmount the difficulties caused by the unimaginable tragedy in Lahaina on August 8th. There is so much suffering in our community and worldwide, but seeing so much demonstration of sharing, overcoming, and aloha is heartening. I have heard and witnessed so many beautiful stories and acts of resiliency. Like the bamboo, people are resilient, bending when a storm comes, staying strong and flexible, and not giving up on life.

MFSS’s employees are like bamboo. They continue to be resilient and give their best to support the families we serve. They might have a family directly affected by the wildfires, yet they ho’omau (persevere). I am incredibly grateful to be working alongside these committed men and women, the MFSS programs, and teams that dedicate much time and effort to delivering our essential services.

Thank you also to our Board of Directors, who tirelessly volunteer their time and talent and for guiding us year-round. We thank our community partners, volunteers, and funders for their continued support.

Sincerely,

Edel Baguio-Larena



**MFSS has been accredited
by COA since 2002**

**WE ENVISION A COMMUNITY
WHERE ALL FAMILIES
ARE PHYSICALLY
AND EMOTIONALLY HEALTHY,
AND WHERE CHILDREN
AND YOUTH REACH
THEIR OPTIMAL POTENTIAL.**

Board of Directors



Michael E. Kim, MD, Board President

Dr. Kim practiced OBGYN on Maui since 1985 and was Board Certified OBGYN in 1987. He retired from Kaiser Permanente in June 2020. He had his own private practice initially before joining Hawaii Permanente Medical Group in 1998. He served as the Chief of Staff at Maui Memorial Medical Center in 1991. Mike has been on the MFSS Board of Directors since 1988.



Giulietta Swenson, PsyD, Board Vice President

Dr. Swenson is a Clinical Psychologist at the Maui Memorial Medical Center. She has over 12 years of diverse Clinical Psychology experiences including being the Mental Health Specialist for the Early Head Start program of MFSS from 2010 to 2014. Giulietta joined the MFSS Board of Directors in October 2015.



James Geiger, Esq., Board Secretary

Jim is a partner with Mancini, Welch & Geiger since 2002 practicing in the areas of commercial litigation, general business advice, and land use matters. Jim is the current MFSS Board Secretary and has been on the MFSS Board of Directors since 1989.



Steve Clark, MD, Board Treasurer

Dr. Clark is a dedicated pediatrician in private practice on Maui since 1985. He was a member of the Active Medical Staff at Maui Memorial Medical Center and served on numerous hospital committees. He also served as Chairperson for the Department of Pediatrics in 1991-1992. Steve currently serves as the MFSS Board Treasurer and has been on the MFSS Board of Directors since 1995.



Arliza Borja-Losano, Board Member

Arliza is an Assistant Vice President and Private Banker at First Hawaiian Bank. She strives to build long-lasting relationships with high net worth individuals and business owners to help them and their loved ones achieve financial wellness. A graduate of Baldwin High School, she married her high school sweetheart and they are parents to four children. Arliza joined the MFSS Board of Directors in April 2017.



Joycelyn Victorino, Board Member

Joycelyn has been a long time supporter and community partner of MFSS. She retired in May 1, 2020 from ILWU where she worked for over 30 years. Joycelyn is a member of the EHS Policy Council, and is a part of multiple boards, groups and clubs including the Portuguese Club, Maui Native Hawaiian Chamber of Commerce, Maui Democratic Party, Wailuku Heights Extension Community Association and ILWU Maui Pensioners Club and Lahaina-Honolua Seniors Club. She is a wife, the mother of two adult sons, grandmother of five, great grandmother of four, and the former first lady of Maui County. Joycelyn joined the MFSS Board of Directors in May 2019.



Jorge Tirona, Board Member

Jorge is a Vice President and Senior Commercial Underwriter/Relationship Officer with Central Pacific Bank in Kahului. Born in Washington DC and raised in New York, Hong Kong, and Manila, he obtained an MBA in International Development Finance from The George Washington University. He has lived on Maui since 2007 with his wife Margarita and two daughters. He is active on the tennis courts as well as on the Boards of the Maui Food Bank and the Maui Filipino Chamber of Commerce, among others. He joined the MFSS Board of Directors in December 2019.



Desiree Kawasaki Abreu, Board Member

Desiree is an Early Childhood Special Educator with the Department of Education. She has over 25 years with the Department as a School Counselor, Student Services Coordinator, Teacher and Administrator. Ms. Des prides herself on being a passionate advocate for children . She joined the MFSS Board of Directors in September 2022.



Punahale Ho'opi'i, Board Member

Punahale Hoopii has been a Juvenile Parole Officer/Community Liaison with the Office of Youth Services, Hawaii Youth Correctional Facility under the State of Hawaii Department of Human Services since 2018. She is a former Early Head Start parent and served as the program's Policy Council Chairperson in September 2018, and she remained a Community Member when her son graduated in 2022. Puna joined the MFSS Board in March 2023.

Executive Leadership Team



Edeluisa Baguio-Larena, Chief Executive Officer, 22 Years

Edel holds a Masters of International and Intercultural Management and a Bachelor's Degree in Social Work. She served as the MFSS Director of Early Childhood Education from 2008 to 2014. She was appointed as Acting CEO of MFSS in October 2014 and became CEO in March 2015. She reports to the Board of Directors and is responsible for the organization's consistent achievement of its mission, strategic plan, and financial management.



Zina Andrade, Administrative Supervisor, 31 Years

Zina Andrade has been with MFSS for 31 years. She assists the MFSS Executive Leadership Team in all operations of the organization as well as facility maintenance, office-related functions, general clerical support, administrative support for the CEO, helps with orientation of all new employees and volunteers, and coordinates Board of Directors' meetings.



Daphne Ladia, Project Director, Ho'owaiwai Kaiāulu & Quality Care for Hawaiian Keiki 22 Years

Daphne has a Bachelor's Degree in Human Services Management. She has been the Program Director of the Quality Care for Hawaiian Keiki program since 2016. In January of 2020, she was assigned to manage the Ho'owaiwai Kaiāulu Project which includes Ho'owaiwai Kaiāulu Home Visiting, Pilipa'a Ka 'Ohana, Outreach and Resource Specialists, Hale Hi'ipoī, Kāne Connections, and Youth Services.



Debbie Butay, Chief Financial Officer, 17 Years

Debbie has served as Chief Financial Officer in December 2018. Debbie also held this position from 2012 to 2014. Under the general direction of the CEO, Debbie is responsible for the organization's financial management. She is also responsible for maintaining compliance with program contract requirements and government rules and regulations.



Larae Balag, Director of Early Childhood Education, 7 Years

Larae has a Bachelor's Degree in Early Childhood Education. She is responsible for the operations of Early Head Start (EHS) and Hale Hi'ipoi Infant/Toddler Center in Hāna. Larae has extensive experience in Early Childhood Education and has served as a resource speaker at EHS/Head Start conferences.



Elizabeth Osborn, Project Director, Healthy Families Lāna'i, 6 Years

Beth holds a Bachelor's Degree in Education with an Emphasis on Early Childhood. She joined MFSS in 2017 and has served as Clinical Supervisor to Early Identification and Home Visiting Programs before becoming Program Director of the Healthy Families America-Lāna'i Program. She also serves as Child Development Specialist for HFA-Lāna'i.



Traci Robello, Early Literacy Project Director, 2 Years

Traci has a Master's Degree in Early Childhood Education. She rejoined MFSS in March 2021. She previously worked in various programs at MFSS, then went to Child Welfare Services and MEO Head Start. Before moving to Maui, she worked with the Learning to Grow Project at the University of Hawaii-Manoa, Center on the Family.



December 2022 Staff Retreat



Zina - 30 Year Award

Financial Position

FY 2022 - 2023

ASSETS

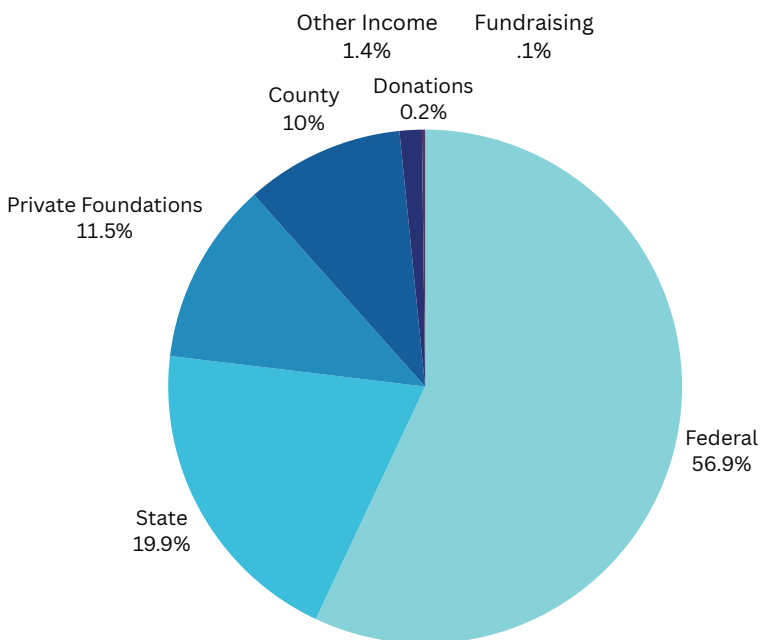
(unaudited, subject to change)

Current and other assets	\$1,292,864.47
Long-term investments and reserves	\$874,955.78
Property and equipment	\$2,569,484.62
TOTAL	\$4,737,334.87

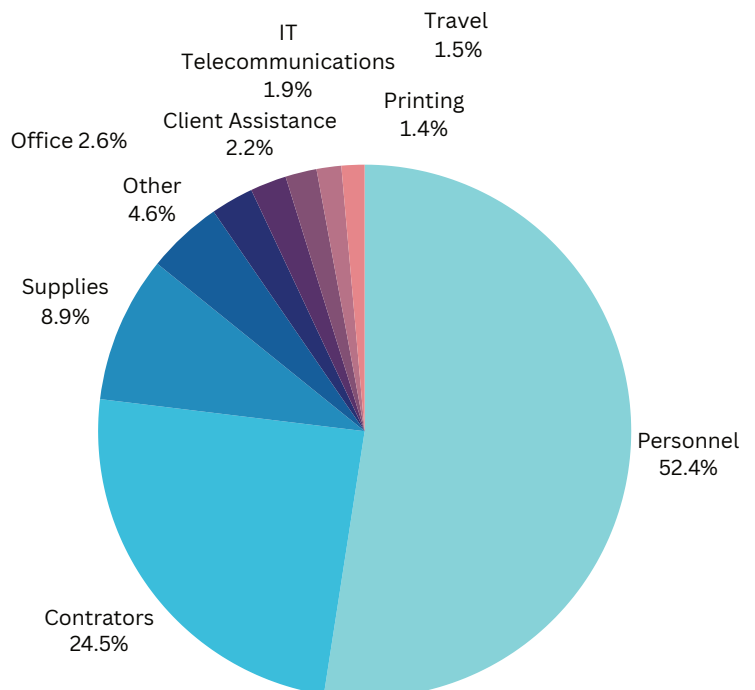
LIABILITIES AND EQUITY

Current and long-term liabilities	\$430,382.17
Equity	\$1,306,952.70
TOTAL	\$4,737,334.87

Income: \$7,252,688.13



Expenses: \$7,058,781.49





Maui Family Support Services, Inc.

Strengthening Children and Families in Maui County since 1980!



Last Year MFSS Provided ...

- Outreach and Resource Information** - Over 1300 new parents visited at Maui Memorial Medical Center
- Home Visiting Programs** - Over 1900 home visits completed with families of children 0 -5 years old
- Low Cost/No Cost Infant and Toddler Centers** - Over 60 children received quality licensed child care
- Groups for Men and Parents** - Over 400 individuals attended support groups on Maui & Moloka'i
- Youth Life Skills Education** - Over 1500 served in Intermediate and High Schools in on Maui & Moloka'i
- Child Care Subsidy Programs** - Over 250 children were able to attend quality childcare in Maui County

Over 8,000 People Impacted in FY 2023

Services Funded By:

75 United Way Maui United Way

kaiāulu

casey family programs

CONSUÉLO FOUNDATION

State of Hawaii Department of the Attorney General

Samuel N. and Mary CASTLE FOUNDATION

State of Hawaii Department of Education & Hawaii P-20

U.S. Department of Health and Human Services **HRSA** Health Resources and Services Administration

USDA Food & Nutrition Service

Maui Hotel & Lodging ASSOCIATION

Office of Child Care
An Office of the Administration for Children & Families

OFFICE OF HEAD START
An Office of the Administration for Children & Families

2022-2023

Early Head Start

Home-Based Services - Since 1998
Center -Based Services - Since 2003



OFFICE OF HEAD START

An Office of the Administration for Children & Families

Serving Maui and Moloka'i with Home-Based Services since 1998 and Center-Based services on Maui since 2003. Hale Hi'ipoi and Licensed Family Child Care Homes were added as EHS program options in August 2022. Home-Based services are provided in the family home by trained and dedicated Home Visitors who visit with prenatal women and families with children from birth to age three years old once per week. Together, they watch and think about the child, and help the child learn using the families' interactions, daily routines, and household materials. Twice per month, families come together for Socializations where caregivers and children can play and learn together. Center-Based services are provided at one of our three child development centers in Wailuku or Lahaina. Our EHS learning environments are nurturing spaces that support the learning of very young children and create safe, fun, and welcoming environments for infants and toddlers. Partnership Licensed programs mirror our EHS learning environments while providing extended daycare for working families.



Larae Balag
Director
Early Childhood Education
7 Years



Leigh Racadio
Center-Based Supervisor
10 Years



Anuheia Medeiros
Child Development Specialist
10 Years



Tricia Gouveia
Health Specialist
9 Years



Sinolian Hallens
Family & Community
Engagement Specialist
5 Years



Tishanie Koyanagi
Program Assistant
1 Year



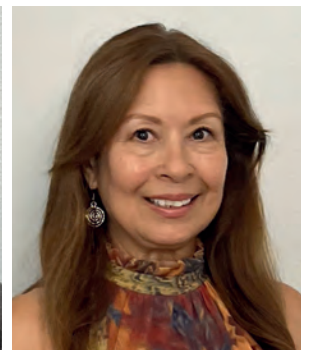
Geri Derego
Family Support Partner
7 Years



Jackie Sua
Family Support Partner
1 Year



Liana Pagan
Family Support Partner
1 Year



Arlene Tendo
Home Visitor
18 Years

Early Head Start



Cyntia Pennington
Home Visitor
15 Years



Kristie Nakamoto
Teacher
13 Years



Madelyn Quemado
Teacher
11 Years



Alohi Labra-Clark
Teacher Aide
11 Years



Rana Abner
Teacher
9 Years



Kristen Agarpao
Lead Teacher
6 Years



Bronwyn 'Lei' Agarpao
Teacher Aide
5 Years



Alje Edmond
Teacher Aide
4 Years



Maria Javalde
Teacher Aide
4 years



Anita Hermios
Teacher
3 Years



Leanne Domingo
Teacher Aide
1 Year



Sade Kahue
Teacher
1 Year



Tori Honokaupu
Teacher Aide
1 Year



Kaitlin Gusman
Teacher Aide
1 Year



Rose Onate
Mentor Coach
9 Years



**Maui Family Support Services, Inc.
Early Head Start-Annual Report
August 1, 2022 – July 31, 2023**

Note: Figures are preliminary, unaudited and subject to change

Total Amount of Public and Private Funds Received			Budgetary Expenditures		
	Budgeted	Actuals		Budgeted	Actuals
Public	1,877,910.00	1,878,087.44	Personnel	1,074,950	1,062,387.18
Private	183,000.00	183,951.19	Fringe Benefits	337,650	397,721.24
Donated Goods/Services	185,377.50	185,377.50	Equipment & Supplies	296,753	212,002.04
Total	2,246,287.50	2,247,416.13	Contractual Services	114,344	148,792.09
Amount from Sources:			T & TA	30,881	30,886.29
US Department of Health and Human Services	1,743,910	1,743,910.30	Other	206,332	210,356.65
County of Maui	70,000	70,807.62	In Kind & Volunteers	185,377.50	185,377.50
State of Hawaii, Dept of Education	64,000	63,369.52	Total	2,246,287.50	2,247,416.13
Hawaii Community Foundation	60,000	60,000			
Kamehameha School	60,000	60,000			
Castle Foundation	50,000	51,029.52			
Maui United Way	13,000	12,921.67			
Total	2,060,910	2,062,038.63			

**Proposed Budget
August 1, 2023 to July 31, 2024 Program Year**

Program Operations:	
Personnel	991,107
Fringe Benefits	283,089
Equipment & Supplies	115,957
Travel	7,965
Contractual Services	282,535
Other	216,043
Training and Technical Assistance	30,881
TOTAL	1,927,577
In-Kind & Volunteers	134,634
PROGRAM YEAR TOTAL	2,062,211



Services to Children and Families 2022-2023

Number of children served...90

Number of families served ...98

Number of Pregnant Mothers... 11

Percentage of children/pregnant women served who are at or below the Federal Poverty Guidelines: 41%

Percentage of children served who are or were in foster care: 3%

Percentage of children/pregnant women served who receive/d SNAP or Public Assistance: 23%

Percentage of children/pregnant women served who are/were homeless during enrollment: 27%

Average Monthly Enrollment: 80%

Percentage of Enrolled Children that Received Medical and Dental Exam/Oral Health Screenings

Medical100%

Dental/Oral Health Screenings...73%

Efforts to Prepare Children for Kindergarten & Parent Engagement Activities

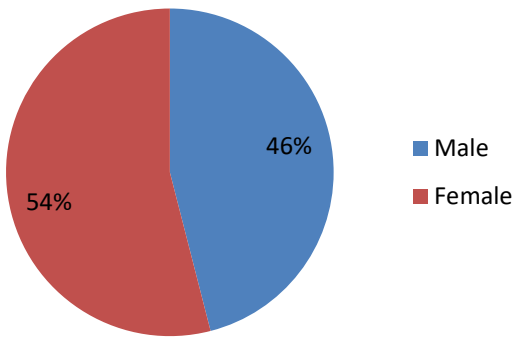
Annual 2022-2023 School Readiness Report

- 3rd Checkpoint Period consist of 70 children with assessment data. Data is reflective of the children who received Home Based, Center Based, and Family Child Care Partnership services between April and July 2023. Approximately 12% out of the 70 children assessed during this period received early intervention services with Individual Family Support Plan (IFSP).
- Five Central Domains of development in the Teaching Strategies GOLD assessment system are utilize to report **children's growth and learning. Teaching Strategies GOLD provides MFSS EHS teachers, home visitors, and administrators with valuable data 3 times a year to track and monitor children's progress as well as to assess progress** in each service option: Home Based or Center Based. Aggregating the data provides an overall snapshot of performance, agency wide.

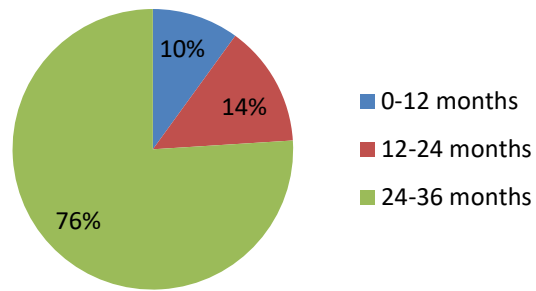
Demographics of Participants

- The charts below show the demographics of the participants within the 3rd Checkpoint Period.

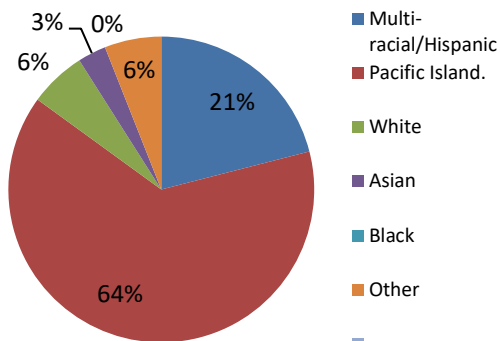
Gender



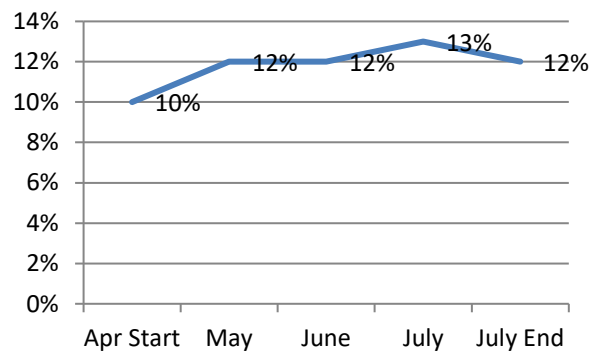
Age



Race



Part-C



➤ The tables below represent children’s progress towards the five central domains of development, program wide.

Table 1: Approaches to Learning

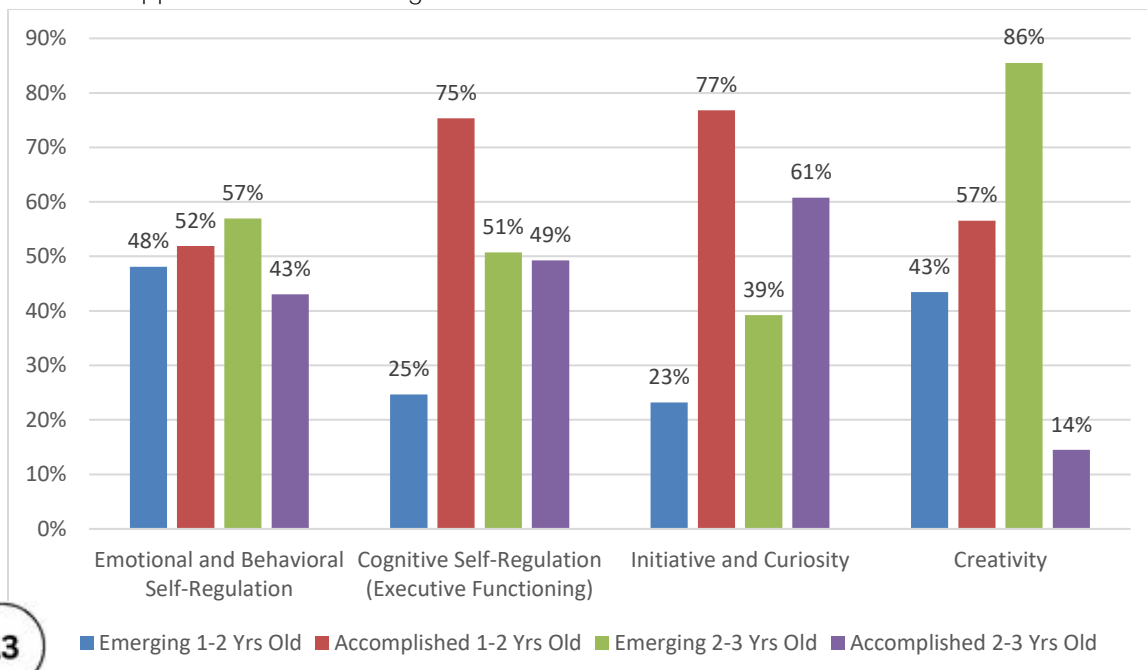


Table 2: Social & Emotional Development

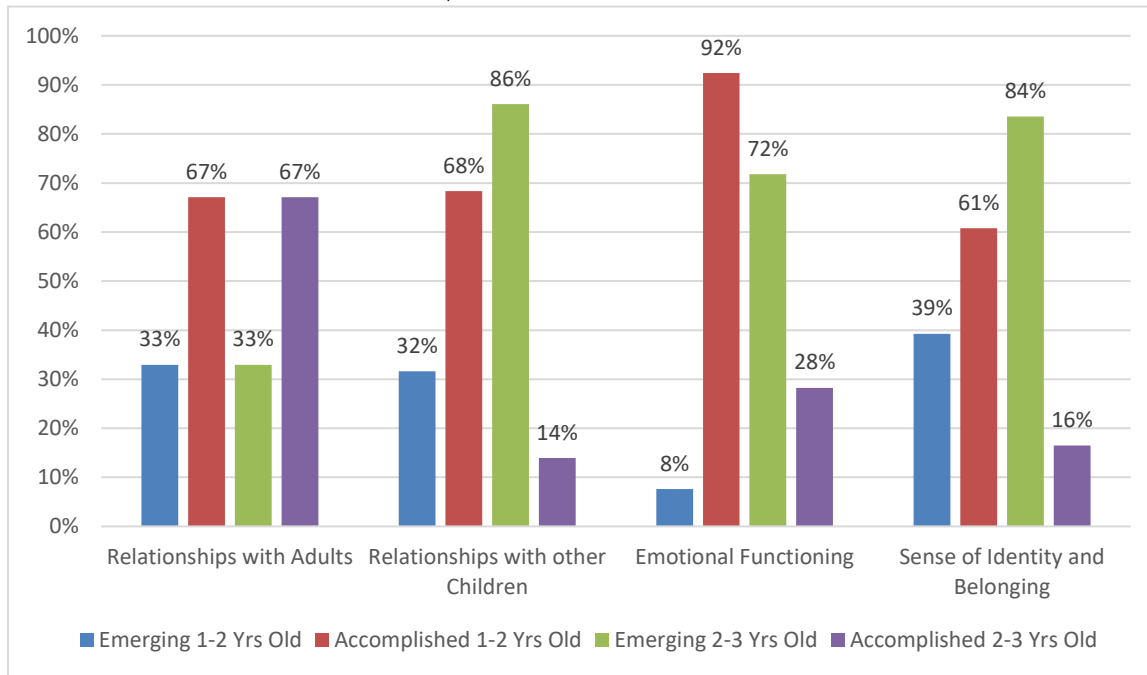


Table 3: Language and Communication

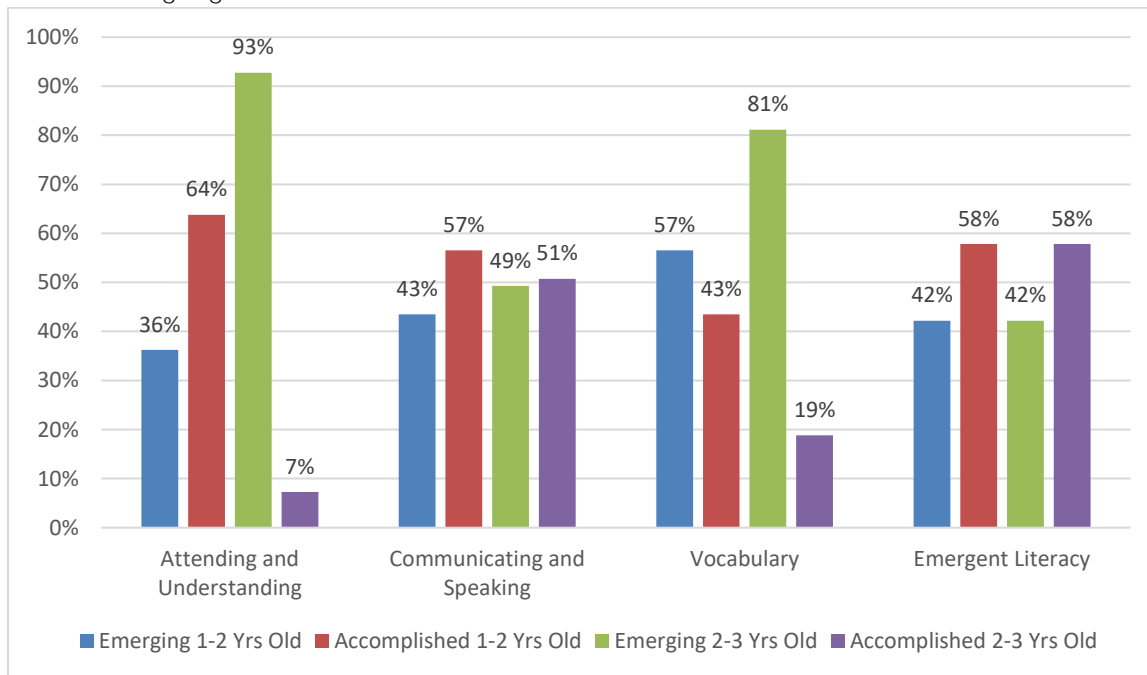


Table 4: Cognition

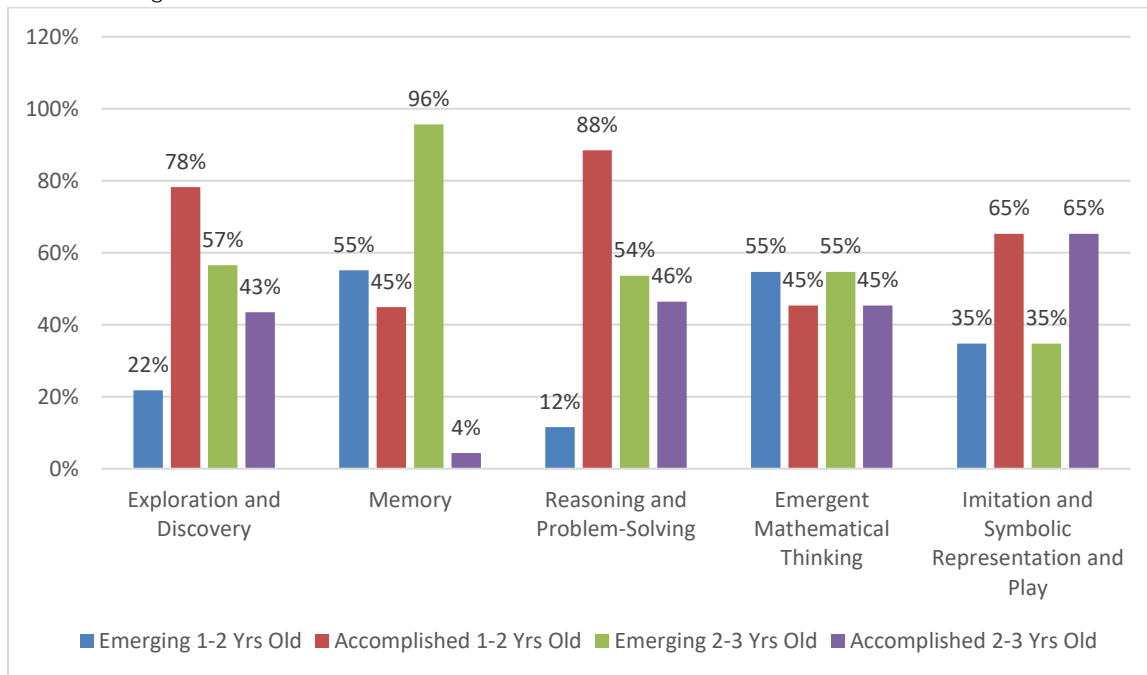
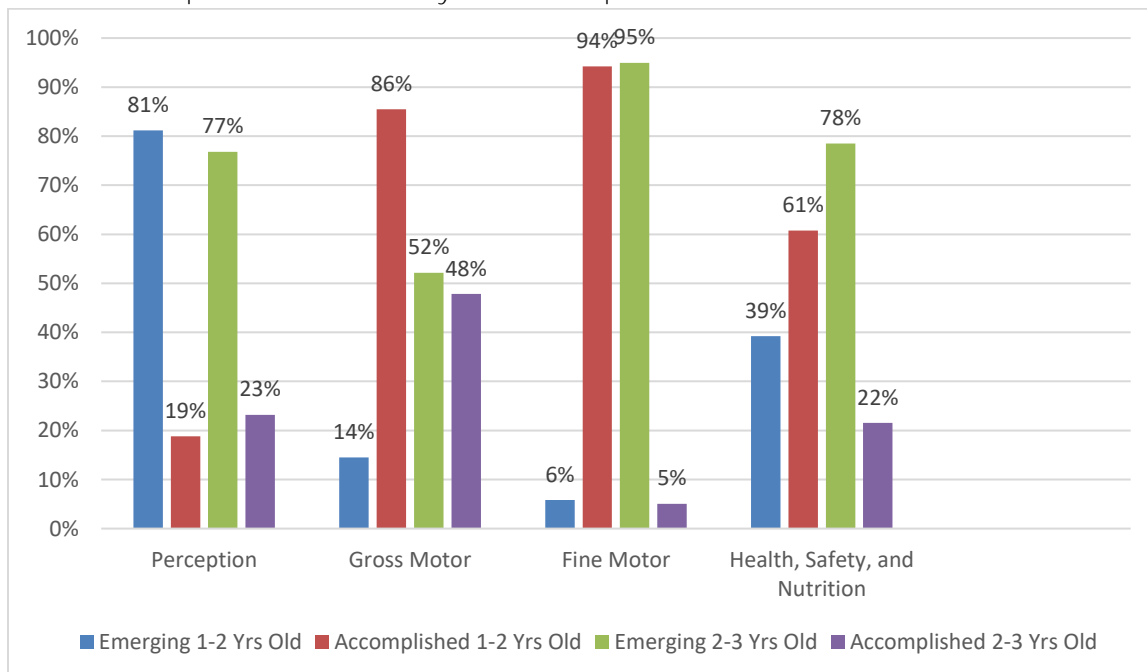


Table 5: Perceptual, Motor, and Physical Development



➤ Data Outcome: The table below represent children’s progress towards School Readiness Goals. The table reflects contrasting data of children’s progress in both Center Based and Home Based option.

	Center Based Lahaina	Center Based Waiale	Center Based Wailuku & FCC		Home Based
School Readiness Goals	Children Meeting School Readiness Goals				
Goal 1 Language: Child will acquire new words to enhance vocabulary.	100%	100%	89%	-	90%
Goal 2 Social-Emotional: Child will follow classroom rules, directions, and routines.	93%	79%	71%	-	91%
Goal 3 Cognitive: Child will increase problem-solving skills to use in everyday events and situations.	89%	83%	75%	-	64%
Goal 4 Physical: Child will become self-sufficient in their personal needs.	91%	89%	65%	-	90%
Goal 5 Approach to Learning: Child will demonstrate attentiveness and cooperation in various activities with persistence.	90%	83%	75%	-	68%

- Data Summary: The data collected from TSG Checkpoint shows that MFSS EHS children, both Home Based, Center Based and FCCP, made slight progress in meeting widely held expectations for their age group in the second assessment period, compared to the first assessment.

- In the area of *Approaches to Learning*, data shows growth in every age group particularly in the *sub-domain: creativity* where 86% of children ages 2-3 are emerging in this area by the end of second checkpoint period.
- In the area of *Social and Emotional Development*, 92% of children ages 1-2 successfully gained skills in the *sub-domain: emotional functioning*, while 86% of children ages 2-3 are emerging in the *sub-domain: relationships with other children*.
- In the area of *Language and Communication*, approximately 93% of children ages 2-3 gained skills in the *sub-domain: attending and understanding*, while 81% children of the same age group gained skills in the *sub-domain: vocabulary*.
- In the area of *Cognition*, 96% of children ages 2-3 successfully gained skills in the *sub-domain: memory*, while 88% of children ages 1-2 gained skills in *sub-domain: reasoning and problem solving*.
- In the area of *Physical Development*, 95% of the 2-3 year olds gained skills in *fine motor* while 94% of children ages 1-2 gained similar skill set.
- Areas of Improvements:
 - Monitor teachers and home visitors' data entries and observation notes
 - Review teachers and home visitors' data collection process on School Readiness Goals using Teaching Strategies Gold
 - Provide ongoing professional development training to staff for data-entry accuracy and validity

Family Engagement 2022-2023 Activities Report

Family Well-Being: Pedestrian Safety; Car Safety; Fire Safety; Nutrition and Healthy Choices; Preventing Lead Exposure in Children; Preventing Child Heat Strokes in Cars; Family Planning; SIDS Prevention through Safe Sleeping Practices for Baby; Immunizations-Protecting your Child; Home Safety; Dangers of Second Hand Smoke; The Flu-Germs and Hand Washing; Baby Bottle Tooth Decay; Emergency Preparedness Procedures; Facts on Mumps; Managing Stress; The Importance of Fatherhood Involvement; Help Finding Affordable Housing; and Stress management; RSV; Respiratory Syncytial Virus Presentation, Trick or treat safety.

Families as Advocates: Well-Baby Checkups and What to Expect at the Doctor's; Transition Information - What to look for and what to ask when looking for childcare and preschools; Parent In-kind support for the EHS program; and Parent participation in Policy Council.

Families as Life-Long Learners: Read Aloud America; Financial Literacy/Budgeting/Financial Stress/Building Credit, Understanding Tax Deductions & Filing Taxes, Learning How to Maintain Accounts with Financial Institutions; Vocabulary Building Techniques: Seguin Three Period Lesson/Dialogic Reading, Speech & Language Developmental Milestones; Math & Science Every Day at age One to Three; School Readiness Goals; and Positive Disciplines and Temperaments. Social Emotional Learning in Young Children; Cultivating Mindfulness to Foster Social Emotional Learning in Young Children. Mindfulness Practice

Family Engagement in Transitions: Continuing programs after 3 years of age; Preschool Subsidy Programs and Panelist; and Presentation of available Preschool Programs and Resources. Monthly Parent Committee Meeting.

Positive Parent & Child Relationships: Positive Disciplining and Parenting Styles; Cultural Sharing of songs and stories; Early Learning through Routines and Children Thrive on Routines; Sensory Play; Social Emotional Development: Managing feelings; Toddlers’ Brains Under Construction/ Brain Power; Age-appropriate Toys; Toilet Training; Crying for Help; the Myths about “Spoiling” Infants; and How to Cultivate Emotional Intelligence in Children.

EHS Year Four Program Goals Summary

Each year the program seeks to improve quality services to families within Maui County. The program completes a self-assessment and community assessment, which allows the program to adjust services to meet the needs of families within the community. Below are the MFSS EHS program goals and year four actions that the program has completed to accomplish each goal.

Goal	Year Four 2022-2023 Progress Efforts
Program Goal 1: Expand early childhood education services in Maui County to serve a larger percentage of children in Quality Licensed Infant/Toddler settings.	<ul style="list-style-type: none"> A. Program implemented Staff wellness Program Committee. B. Program contracted (2) two FCCP’s with 11 children enrolled C. One (1) childcare center partner provides services for 4/6 eligible children. D. Program continues to offer CDA and post vacant positions in house to support Teacher Aides to become I/T Teachers. E. The program continues to collaborate and participate with local entities to seek quality individuals looking to work in the ECE field. F. The program continues to recruit and contract Licensed Childcare homes.
Program Goal 2: Increase the number of EHS children transitioning to Head Start or Community Preschool settings after aging out of EHS with facilitating seamless and well-coordinated services for families to support their children’s success in education.	<ul style="list-style-type: none"> A. The program continues to monitor and track child entering community preschools and childcare homes for children 3-5. B. The program continues to update “Preschool Here I Come” handbook each year. C. Preschool resource Fair was completed in the Spring 2023. D. The program continues monthly ongoing reporting and tracking of children who will be transitioning out of EHS.
Program Goal 3: Integrate, and implement revised School Readiness Goals plan to ensure all children and families are receiving high quality comprehensive services.	<ul style="list-style-type: none"> A. The program focused on School Readiness Goals and it’s alignment across program content areas with Staff during Preservice B. The Program continues to share ongoing monitoring with the Governing Board, Policy Council Members, Parents, Networking Meeting in Maui County and State, etc. C. 80% of classroom activities and lesson plans reflect SRGs. D. 100% of HB activities and lesson plans reflect SRGs. E. The program continues to share SRG during Monthly Parent Meetings. F. Coaching began with two Teacher/Teacher Aide.
Program Goal 4: To improve children and families’ overall health, development and family outcomes based around planning and achieving SMART goals.	<ul style="list-style-type: none"> A. The program continues to survey staff in a variety of formats to determine skill set, working relations, and areas of need. B. The program hosts an ongoing book club. C. Family and Community Specialist monitor child/family SMART goals on a monthly basis. D. The family Partnership Plan has been updated to better align staff in creating SMART goals. It also includes space for staff to track the progress of the goal. E. Staff have identified and referred families to resources based on their needs and FPP goals F. Staff continue Developmental screens to check child’s progress and or any delays that need a referral

	G. Varieties of ongoing Staff wellness activities have been implemented during Program year.
<p>Program Goal 5: MFSS EHS services will increase compatibility with Pacific Islander cultures and other identified cultures of participants within the program. Socializations and Monthly Parent Meetings will be cultural relevant for families.</p>	<p>A. The program was able to maintain 4 Staff members, who speak 2 of the current dialects of enrolled families.</p> <p>B. The program continues to monitor the cultural practices in the classroom, during home visits and socializations based on lesson plans.</p> <p>C. The programs agency has a contract with a language interpreter agency and this service is available to all Staff and families.</p> <p>D. Policy Council and HSAC has a mixture of families that represent the demographics of families enrolled.</p> <p>E. The program continues to purchase books, and materials that reflect enrolled families.</p>



Early Head Start Family Child Care Partnerships



OFFICE OF HEAD START

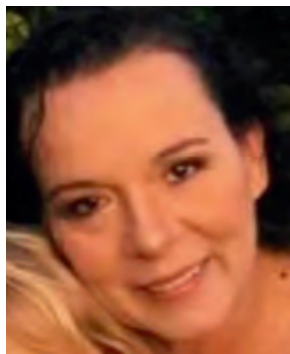
An Office of the Administration for Children & Families

Since 2022

Early Head Start began contracting Licensed Family Childcare Providers in August 2022 with just two Providers. As of December 2023, the program now has six Providers. Families enrolled in Licensed Provider care, receive mirrored services as children enrolled in Early Head Start classrooms. Almost half our Early Head Start child care services are provided through our Family Child Care Partnership providers.



Ashley Barbosa
Little Opihi's



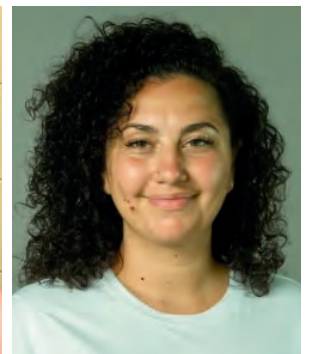
Rebecca Bell
Little Miracles



Brandi Mawae
Country Keiki Care



Christina Parilla
Aunty Tina's
Central Maui Daycare



Farrah Rondeau

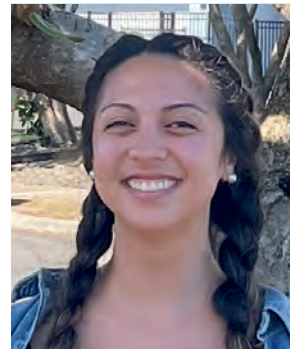


Tany Rust
Granny's

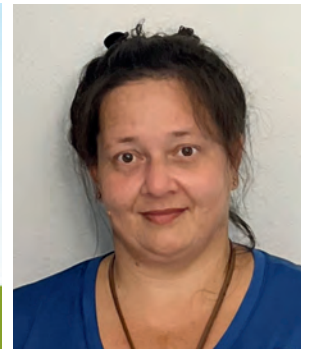
**Supported
by
EHS Staff:**



Larae Balag
Director
Early Childhood Education



Anuhea Medeiros
Child Development Specialist



Tricia Gouveia
Health Specialist



Sinolian Hallens
Family & Community
Engagement Specialist



Tishanie Koyanagi
Program Assistant



Geri Derego
Family Support Partner



Jackie Sua
Family Support Partner



Liana Pagan
Family Support Partner

Early Literacy

E Heluhelu Pū (Let's Read Together)

Fiscal Year 2022-2023 (October 2022 to October 2023)

Early Literacy began it's fourth year and final year of the project starting in July 2023



Traci Robello
Project Director
2 Years



Patty Paranada
Program Assistant
16 Years

Hawai'i
P-20

The Comprehensive Literacy State Development (CLSD) grant is funded by the U.S. Department of Education (USDOE). The purpose of the CLSD grant is to create comprehensive literacy programs to advance literacy skills through the use of evidence-based practices, activities, and interventions. Through the Hawaii DOE, and administered by Hawaii P-20, MFSS received a grant for the Early Literacy (EL) project. The goal of the Early Literacy Project is to supplement current early literacy efforts with innovative strategies to: (1) advance the foundational language and literacy skills in our youngest keiki; and (2) engage families to support their children's development and learning, targeting the most vulnerable and underrepresented communities.

Initiatives: The Hawaii CLSD program will focus on the following initiatives:

- (1) Student/child literacy,
- (2) Family literacy, and
- (3) Culture-based education.

Outputs

Child Literacy

- Provided thousands of quality books and early literacy manipulatives to families through our partners.
- Developed a Data System to assist in collecting, monitoring, and analyzing child and family levels of data.

Family Literacy and Culture-based Education

- Created local bookmarkers and posters for our partners and outreach events.
- Printed and distributed the following books to our partners: All Around Maui, 'Ohana Song book, My Hale and Me.
- Created over 200 "calm down" bottles for our partners and community as a sample stress reliever for adults and children after the wildfires in August.
- Started the MFSS Book Swap using the donated books from Pu'u Kukui Elementary School Book Worm book club.
- Partners with Kākou for Keiki Talking is Teaching public education campaign.
- Collaborates with Ho'oikaika Partnership and assisted in developing the Kalo Boy book.
- Little Free Library pilot project installed in July 2023 at Kenolio Apartments.



Early Literacy

E Heluhelu Pu (Let's Read Together)

Professional Learning

- EL has 11 partners - eight implementing partners, three supporting partners - MFSS programs, MEO Head Start and Tutu & Me Maui, serving over 900 children. Supporting partners are programs that don't have direct (face-to-face) contact with the children and families.
- Had a successful Retreat in August 2023 that included review training on our evidence-based practices of SHELLS bookmaking, Dialogic Reading, and Phonological Awareness and many hands-on activities and partner participation.
- Sent 10 partner staff members to the National Association for the Education of Young Children (NAEYC) national conference in Washington DC in November 2022.
- Started monthly Early Literacy newsletters in September 2023 and emailed to all our partners.



EL Retreat in August 2023

Outcomes:

Child Literacy:

- 81% of infants and toddlers met or exceeded their developmental milestones.
- 94% of three year olds met or exceeded their developmental milestones.
- 91% of four year olds met or exceeded their developmental milestones.
- 100% of four year olds (60 children) achieved a gain of at least three points in the Teaching Strategies Gold Language Area.
- Teaching Strategies Gold Literacy: 77% of four year olds are in the expected age range.

Family Literacy and Culture-based Education

- 56% of families have more than 20 picture books in their home (baseline from Family Literacy Survey).
- 57% have family members who read "almost daily" to their child (baseline from Family Literacy Survey).
- 66% of families sing songs to their child everyday (baseline from Family Literacy Survey).
- 2133 sessions were held by all partners where families were provided EL information/training.
- 19 sessions were completed online using our Family website by 13 participants.

Professional Learning

- EL online learning platform: 178 sessions completed, 96 staff completed at least one evidence-based practice (SHELLS bookmaking, Dialogic Reading, Phonological Awareness) session. A total of 276 sessions have been completed since the beginning of this project.
- Most met fidelity, based on observation and self-assessments.
- Data from the August 2023 Early Literacy Retreat showed that participants said that their knowledge and skills improved in SHELLS (83%), Dialogic Reading (89%), and Phonological Awareness (94%).





Hale Hi'ipoi

Hāna Infant and Toddler Center

Since 2015

In May 2015, MFSS officially opened Hale Hi'ipoi, the first licensed Infant and Toddler Center in the Hāna Community. Located on the campus of Hāna Elementary and High School, the Center offers quality childcare to children ages 6 weeks-3 years. The creation and opening of Hale Hi'ipoi have been a long planned effort between MFSS, the County of Maui, Kamehameha Schools, and the Hāna community. Hāna previously had no licensed infant-toddler care, which often made it difficult for Hāna High and Elementary to retain staff and ensure a safe environment for the young children of teen parents, keeping them in school. The opening of Hale Hi'ipoi has not only provided children with a safe and developmentally-appropriate place to learn and grow but has provided the opportunity for their parents to work or attend school and has created four new jobs in the Hāna community. Hale Hi'ipoi became an EHS partner program in August 2022.



Larae Balag
Director
Early Childhood Education
7 Years



Kaylee "Ani" Kaiwi
Lead Teacher
9 Years



Kushaiah Scott
Teacher Aide
6 Years



Tea Pua
Teacher Aide
6 Years

In Fiscal Year 2023

- Eleven (11) children from ten (10) families served
- 100% of all children enrolled are at age-appropriate developmental levels
- 100% of all enrolled families have received Home/School Connection activities
- 100% of all enrolled children have completed an active transition plan by age 2
- Hale Hi'ipoi instills Hawaiian language and values into daily routines with the children



OFFICE OF HEAD START

An Office of the Administration for Children & Families



Healthy Families Lānaʻi

Since 1992 (formerly Healthy Start)

Healthy Families Lāna'i (HFL) is a nationally-accredited evidence-based home visiting program model designed to help families build protective factors. Our Family Support Worker works with the parent/caregiver prenatally or soon after birth to cultivate and strengthen nurturing parent-child relationships and promote healthy childhood development. We provide home visit services virtually and in-person to help support families in need. The HFL Family Support Worker is supported by the Clinical Specialist and Program Director/Child Development Specialist. HFL is part of the State of Hawaii's Your 'Ohana Network.



Elizabeth Osborn
Program Director
Child Development Specialist
6 Years



Krissy Garcia
Clinical Specialist
11 Years



Glenda Miguel
Family Support Worker
8 Years

In Fiscal Year 2023:

- 15 Families Served; and
- 328 Home Visits Completed.

Healthy Families Lāna'i home visiting services are funded by Hawaii State Department of Health (DOH), Maternal and Child Health Branch and the Health Resources and Services Administration (HRSA) of the U.S. Department of Health and Human Services (HHS) under ASO 21-057 for grant amount \$516,803.46 This information, content, and conclusions are those of the author and should not be construed as the official position or policy of, nor should any endorsements be inferred by DOH, HRSA, HHS, or the Government.



Community-Building with Core Partner Collaboration



The Ho'oikaika Partnership is a coalition of more than 60 Maui County agencies and individuals committed to preventing child abuse and neglect in Maui County.

The symbol of the Ho'oikaika Partnership is the hukilau, or net, which serves to remind us that our strength is in our working together.

The **mission** of Ho'oikaika Partnership is to strengthen and expand the system of supports in Maui County by building a strong prevention and provider network that supports collaboration, shares knowledge and resources, and shapes policy to prevent child maltreatment.

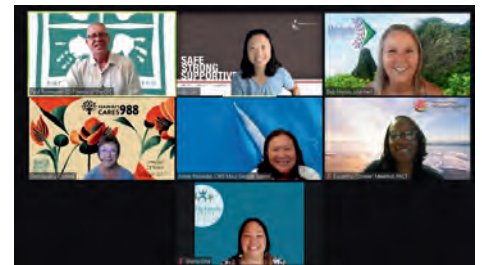


Ho'oikaika Partnership's Public Education Campaign Team developed products to support families, break the stigma around seeking help, and build resiliency in the face of challenges. Funded by the Hawaii Department of Health, Maui District Health Office, the effort aims to promote protective factors, foster early literacy, and strengthen family bonds while celebrating our vibrant Hawaiian culture. At the heart of this campaign is a captivating children's storybook titled "A Journey to Make Pono, He Huaka'i 'Ohana." This tale brings the concept of protective factors to life in a relatable and engaging way for the whole family. Beautifully illustrated by award-winning Native Hawaiian artist Solomon Robert Nui Enos.

The Public Education Campaign included a partnership with Kākou for Keiki called Talking is Teaching, aimed to educate trusted messengers throughout the county and increase awareness in the community of the importance of talking, reading, singing, and playing from birth. The campaign included posters and material kits for families with tips to increase early connections for healthy relationships and future success.



Ho'oikaika Partnership Leadership Hui Continues to find ways to support families through Navigation Services, strengthen direct services providers through a supportive hui, Healing the Healers and much more through their strategic plan and goals.



Ho'oikaika Partnership

Navigation Services



Heidi Allencastre
Family Navigator

Ho'oikaika System Navigation Services help families access services and supports in Maui County. The social services system can be overwhelming and confusing, and families may feel intimidated or embarrassed – which makes reaching out for help or following through on referrals very challenging. Our Navigator acts as a “guide by the side” to coach families and provides a “warm hand off” so children and their caregivers actually connect with program services. The Navigator helps weave a seamless safety net by coordinating, communicating, and collaborating across agencies.

In Fiscal Year 2023, the Navigator assisted **412** families and **759** total individuals. She participated in **12** community outreach events throughout Maui County.



Ho'oikaika Partnership and Family Navigator partnered with Community Leader Claire Kamalu Caroll to help provide the community of Hāna with an Annual Youth Fest in July. The Navigator was able to provide the community with 250 backpacks filled with school supplies, diapers and wipes, keiki and teen hygiene kits, ma'i kits for teen girls, and much more. The Navigator looks forward to supporting the community annually with this event.



Family Navigator partnered with Lāna'i Community Health Clinic and Public Health Nurses in conducting a Keiki health and resource Fest on Lāna'i in June. Over 500 community members attended.

Over 300 Backpacks with school supplies were sent to Lāna'i prior to the beginning of school. The navigator looks forward to supporting and families and youth of Lāna'i in future events and partnerships.



In June, Family Navigator and other MFSS programs went to Moloka'i for an 'Ohana Support event to provide the youth with 250 backpacks with school supplies, diapers and wipes, and materials to help with early literacy. All items were distributed within an hour of the event starting. The Navigator continues to find ways to support both providers and families on Moloka'i.

Ho'owaiwai Kaiāulu Home Visiting



Since 1988 (formerly Healthy Start)

Serving Maui and Moloka'i, Ho'owaiwai Kaiāulu Home Visiting (HKHV) serves families via the nationally-recognized evidence-based home visiting program model, Parents As Teachers (PAT). HKHV staff members work with families to strengthen their parental resilience, increase their knowledge of parenting and child development, and the social emotional competence of their children. Services are provided to help parents decrease stress, increase motivation to learn new parenting skills and gain understanding of their child's health and development.



Daphne Ladia
Program Director
22 Years



Tricia Mynar-Cramer
Associate Program Director
2 Years



Kuuipo Gonsalves-Alonzo
Program Supervisor
23 Years



Karen Cooper
Child Development Specialist
4 Years



Tammy Ruiz
Parent Educator
22 Years



Mandy Soriano
Parent Educator
2023

In Fiscal Year 2023:

- 34 families with 43 children served on Maui and Moloka'i;
- 176 home/virtual visits; and
- 23 Ages and Stages Developmental Screens completed.

Data is based on our Native Hawaiian Education Program (NHEP) Annual Performance Report, submitted June 30, 2023 for September 2022 through August 2023.



Ho'owaiwai Kaiāulu-Pilipa'a Ka 'Ohana



Since 2022

Serving families on Maui and Moloka'i, Pilipa'a Ka 'Ohana (PKO) serves families via the nationally-recognized evidence based Parents As Teachers (PAT) model. Families have the opportunity to participate in a three-hour program that provides activities ranging from art, math, science, fine and gross motor, social studies, and literacy to exploring nature. PKO staff travel to different Upcountry Maui, Central Maui, and South Maui locations to set up preschool-like settings for families to engage in learning through play with their children. PKO groups are also offered virtually.



Daphne Ladia
Program Director
22 Years



Tricia Mynar-Cramer
Associate Program Director
2 Years



Kuuipo Gonsalves-Alonzo
Program Supervisor
23 Years



Karen Cooper
Child Development Specialist
4 Years



Leinaala Bailey Cosma
'Ohana Group Facilitator
2 Years



Sarah Wong
'Ohana Group Facilitator
1 Year

In Fiscal Year 2023:

- 58 families with 66 children served on Maui and Moloka'i
- 61 in person and 5 virtual parent-child interaction groups completed
- 100% of surveyed families show an increase in knowledge of child development



Data is based on our NHEP Annual Performance Report, submitted June 30, 2023 for September 2022 through August 2023.

Kāne Connections

Since 2005

Times have changed how men, fathers, and male caregivers live in today's society. While almost any man can father a child, there are much more essential roles today of being a dad in a child's life. The MFSS Kāne Connections (KC) program began in 2005 and has evolved over a decade of services for men and male caregivers in Maui County. KC's services include men's groups and one-on-one (1:1) support, facilitating and teaching various male topics and lessons. In 2019, the KC program also began to implement the Kamalama - Parenting through Hawaiian Values program, which conducts parenting classes rooted in the understanding that parents are their children's first teachers. Not only does our KC Team provide 1:1 and group sessions, they are also active in various community events, which include hosting the Annual MFSS Celebration of Fathers event. Our KC Program Supervisor is also a member of the Hawaii State Commission on Fatherhood.



Daphne Ladia
Program Director
22 Years



David "Kawika" Mattos
Program Supervisor
8 Years



Cordy Kailiawa
Parent Support Specialist
4 Years



Samuel Holi
Parent Support Specialist
2 Years



Derek Kahalekai
Parent Support Specialist
2023



Brandon Ching
Parent Support Specialist
2023



In Fiscal Year 2023:

- Currently has two full-time positions, a part-time position, and two on-call staff members.
- 255 men were served, of which 155 were fathers and male child caregivers.
- 111 parents (fathers and mothers) participated in the Kamalama Parenting Through Hawaiian Values Program: 59 completed the 12-week program (28 fathers and 31 mothers).
- 52 additional parents began the program and received information and knowledge of healthier parenting, but did not complete the 12-week class for various reasons.
- Over \$3000 donation value received towards the MFSS Annual Celebration of Fathers event.

Ka Pu'uwai O Nā Keiki



Since 2005

Ka Pu'uwai O Nā Keiki/DHS Home Visiting Services has successfully transitioned to a brand new model, Parents as Teachers (PAT), which is an evidence-based home visiting model. Hawai'i is the first state to begin to execute a contract that is funded with Family First Hawai'i allocations. PAT allows direct service staff to continue to empower families to stick together through skill-building focused on school readiness. Direct service staff, including four Parent Educators, one Clinical Specialist, a Registered Nurse, and a doctorate level Program/Clinical Supervisor, have worked hard this past year to stay strength-based, partner with parents, and recognize that parents are their children's first teachers. There have been some challenging cases to work on within the past year, heartbreaking, and sometimes feeling hopeless. Still, the staff on this team get to witness amazing people who work hard and turn their lives around just by having someone believe in them and walk beside them. The team revitalizes through daily team-building activities, debriefs, collaborations, agency support, partner agency support, community, and the families served. The team also hosts in-person monthly Family Days.



Shelly Brown
Program Supervisor
6 Years



Kathi Jones
Registered Nurse
Parent Educator
18 Years



Sher McBee
Clinical Specialist
6 Years



Mia Dadiz-Gaspar
Parent Educator
4 Years



Jolina Bocobo
Parent Educator
2 Years



Jayme Galase
Parent Educator
1 Year



Daisha Ah Yee
Parent Educator
1 Year

In Fiscal Year 2023:

- 62 Families and a total of 281 individuals were served in Maui County;
- 97% of families were NOT confirmed for abuse or neglect;
- 95% had a confirmed medical home; and
- 93% were up to date on immunizations.
- Conducted 1488 home visits including virtual visits.
- Completed 868 screenings and assessments.
- There were 9 families reunited during the fiscal year and a significantly less removals than previous years.



Maui County Early Childhood Resource Center

Since 2002

The Maui County Early Childhood Resource Center (MCECRC), located at 2099 Wells Street in Wailuku, has promoted accessibility to high quality early childhood learning and care for young children and their families. The County of Maui-funded Childcare Subsidy program helps families afford licensed care needed for their keiki while parents are at work or in school. County funding also supports the Family Literacy program's efforts to increase families' access to high quality children's literature.



Melanie Padgett
Program Supervisor
17 Years



Frances "Nita" Helgeson
Literacy Program Specialist
2 Years



Caroline "Kui" Adolpho
Program Specialist
2023



Sherilyn Tourville
Program Specialist
2023

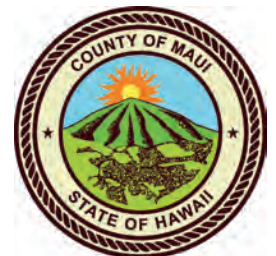
In Fiscal Year 2023:

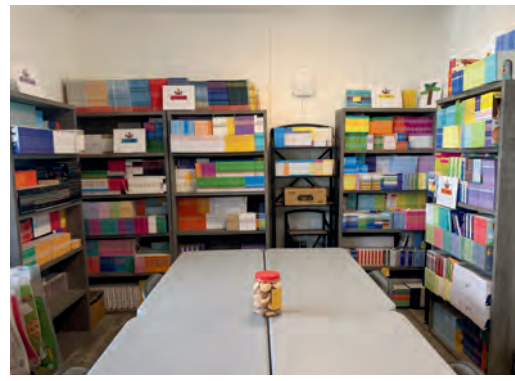
Child Care Subsidies

- 800 families received information about accessing childcare services;
- 121 children received County of Maui tuition subsidies for licensed childcare; and
- over 100 families were assisted to qualify for other childcare subsidy programs.

Early Childhood Family Literacy

- The MCECRC Children's Library has 8900 books available to childcare providers and home visitors to promote early literacy with families they work with.
- MCECRC partnered with pediatricians from 6 Maui County Clinics to provide 2360 Reach Out & Read books to 1665 keiki.
- Dolly Parton Imagination Library for all of Maui County coming in September 2023.





"A Family that READS together, GROWS together"



"Playtime Improves Literacy, Builds Imagination & Creativity"



Outreach and Resource Specialists

Since 1983 (formerly Early Identification Team)

Families benefit from meeting with the Outreach and Resource Specialists (OARS) to identify needs and concerns early on, helping families to best meet their children's needs from an early age and throughout their lives. Since 1983, MFSS has visited new mothers at Maui Memorial Medical Center, providing community resources for all, and referrals to home visiting services for qualifying families. Early identification by the OARS team is essential. In terms of brain development, quality early relationships and experiences can positively affect gene function, neural connections, and the organization of the mind, having lifelong positive effects. Our dedicated team connects with families to ascertain their needs and interests. Team members have extensive knowledge of the services MFSS provides and can make appropriate intra-organization referrals when indicated. If the participant's needs are best served elsewhere, OARS personnel assist the family in locating appropriate services. OARS services are provided on Maui and Moloka'i.



Daphne Ladia
Program Director
22 Years



Cindy Coleman-Jakubczak
Outreach and Resource Specialist
26 Years



Suliana Aki
Outreach and Resource Specialist
Moloka'i
11 Years



Shawni Mendoza
Outreach and Resource Specialist
4 Years

In Fiscal Year 2023:

- Over 1300 families screened and provided with resource information and appropriate referrals;
- 176 families referred for home visiting services; and
- OARS staff attended 12 community outreach events this year.



Office of Child Care

An Office of the Administration for Children & Families



Quality Care for Hawaiian Keiki

Since 2016

Quality Care for Hawaiian Keiki (QCHK) provides child care subsidy assistance to families of Native Hawaiian Children. Services are provided to families who are working, in school or in training (or need child care to start work, school or training), and who are within 85% of the State Median Income. In addition to child care subsidy assistance for families, the QCHK program provides funding to child care providers both licensed and unlicensed, to improve the quality of their programs through health and safety improvements, and professional development. Services are provided on Maui, Moloka'i, and Lana'i.



Daphne Ladia
Program Director
22 Years



Darlyn Kin Choy
Provider Specialist
22 Years



Jenifer Fernandez
Family & Community Specialist
7 Years

In Fiscal Year 2023:

- 110 families served;
- 146 children received subsidy assistance;
- 85 participating child care providers;
- 33 workshops/activities/trainings;
- distributed over 30,000 informational handouts on Choosing Quality Childcare; and
- distributed over 800 informational handouts on education and job training resources.

YOUTH SERVICES

Since 2009

Our youth are strong, passionate, and motivated. With the right inspiration, tools, and guidance, they can confidently meet the challenges before them, enabling them to set and achieve their goals. MFSS Youth Services Program provides these opportunities to youth through the facilitation of Botvin's Life Skills Training (LST).

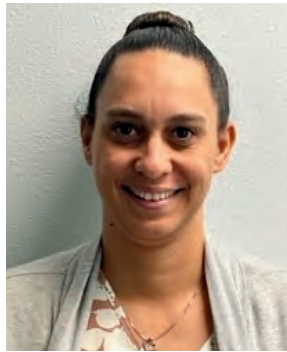
LST is a research-validated substance abuse prevention program proven to reduce the risks of alcohol, tobacco, drug abuse, and violence by targeting the major social and psychological factors that promote the initiation of substance use and other risky behaviors. MFSS Youth Services program has provided this service since 2009 in DOE schools on Maui and Moloka'i. We currently serve the following high schools: Baldwin High, King Kekaulike High, and Moloka'i High. We also serve the following middle schools: Lokelani Intermediate, Kalama Intermediate, Iao Intermediate, and Moloka'i Middle School.



Momi Medeiros
Program Supervisor
11 Years



Suliana Aki
Youth Service Facilitator
Moloka'i
11 Years



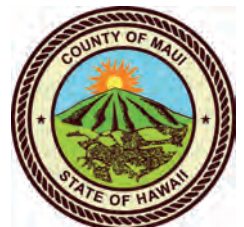
Gena Han
Youth Services Facilitator
2023



Lilyana Ferguson
Youth Services Facilitator
2023

In Fiscal Year 2023:

- Served 282 students in Lokelani Intermediate School
- Served 255 students in Kalama Intermediate School
- Served 321 students in Baldwin High School
- Served 136 students in King Kekaulike High School
- Served 249 students in Iao Intermediate School-After school program
- Served 133 students in Iao Intermediate School - Health class
- Served 94 student in Moloka'i Middle School
- Served 30 students in Moloka'i High School
- Total students that received Life Skills Training facilitation in fiscal year 2023: 1,500



Administrative & Finance Teams

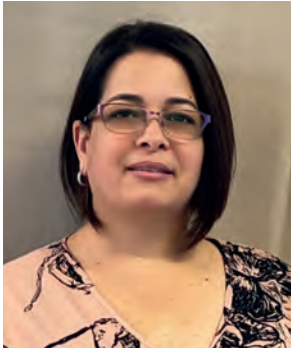
Administrative Team



Zina Andrade
Administrative Supervisor
31 Years



Bridget Chang
Program/Admin Assistant
8 Years



Shelley De Contreras
Program/Admin Assistant
2 Years

Finance Team



Debbie Butay
Chief Financial Officer
17 Years



Lyka Reed
Accounting Specialist
7 Years



Ane Miller
Accounting Specialist
5 Years



SheriAnn Sardinha
Purchasing Assistant
2023

Years of Service Awards

5 Years



Bronwyn Agarpao
Teacher Aide



Sinolian Hallens
Family & Community Specialist



Ane Miller
Accounting Specialist

10 Years



Anuhea Medeiros
Child Development Specialist



Leigh Racadio
Center Supervisor

15 Years



Cynthia Pennington
Home Visitor

22 Years



Edeluisa Baguio-Larena
Chief Executive Officer



Darlyn Kin Choy
Provider Specialist



Daphne Ladia
Program Director



Tammy Ruiz
Parent Educator

23 Years



Kuuipo Gonsalves-Alonzo
Program Supervisor

26 Years



Cindy Coleman-Jakubczak
Outreach & Resource Specialist

31 Years



Zina Andrade
Administrative Supervisor

Awards and Recognition

Irene “Cookie” Chong Kee Memorial Award

DAPHNE LADIA



With her 22 years of service to MFSS, Daphne has given so much to the agency. She started as a Family Support Worker and held various supervisory roles, up to managing two critical programs of MFSS.

Daphne is always willing to go above and beyond her positions. She is among the first to arrive at community events and always the last to leave, always ready to help, set up and clean up. She models perseverance, initiative, teamwork, and devotion to the mission of MFSS by supporting all of us at the Elua and Wili Pa offices. She is involved with everything.

Daphne demonstrates her commitment to the participants of MFSS by writing grants, developing programs, and being a vital member of the Executive Leadership Team. She works many hours dedicated to MFSS to see success in the families we all serve. She always gives more than 100% and is so patient and kind.

Team of the Year Award

KĀNE CONNECTIONS

The Kāne Connections Team positively impacts the lives of men in our community. The team goes above and beyond for the men and their families they serve, doing a great job reaching out to fathers and families in the community. They emphasize the importance of father figures for children.

Kāne Connections have such an impact on MFSS by all the kōkua given willingly at events like Celebration of Fathers and Stand for Children and sign-waving in our communities for a purpose.

The Kāne Connections Team deserves this award because they are changing the lives of men out there who are seeking help.

They make a difference daily and do hard work for our community.



Team Member of the Year Award

HEIDI ALLENCASTRE



Heidi is a team of one of the MFSS-Navigation Services. Yet, she is involved in several committees with MFSS, including the Ka Pu’uwai O Nā Keiki’s Parents As Teachers (PAT) Advisory Committee, the Healthy Families-Lāna’i Continuous Quality Improvement, two Ho’oikaika Committees and the Kākou for Keiki Family Engagement Committee.

Heidi is always willing to share her knowledge and skills by presenting at various MFSS Programs’ Team Meetings and All-Staff Meetings. She is committed to assisting families needing extra support, including our MFSS staff. Despite her workload, she volunteered to facilitate the Mālama MFSS ‘Ohana-Support Group for staff after the wildfires.

Heidi is always willing to do community outreach, especially on Moloka’i, Lāna’i, and Hāna. She always does so much for the families, bringing awareness to hurting families that need healing and support. She serves with so much love!

Community Partner Award

Aloha House Maui



We are proud to partner with Aloha House in providing Hui Kāne men's group at Aloha House in the last fiscal year. In addition, Aloha House staff members have been faithful in bringing their kāne to our Monday night men's group at the Cameron Center. Along with supporting Hui Kāne, Aloha House staff members and participants have been a huge support at our agency-sponsored Celebration of Fathers and Stand for Children events by volunteering before, after, and during our events. They have also participated in various sign-waving events sponsored by MFSS.

Mahalo Aloha House for your continued support!

Messages from Stakeholders

YOU ALL ARE SIMPLY WONDERFUL AND SO EASY TO WORK WITH, ESPECIALLY WHEN I HAD NO IDEA HOW TO INITIALLY GO THRU THE PROCESS. THE MONTHLY IN-KIND KEEPS US CONNECTED AND HELPS ME BE A BETTER MOMMY.

We appreciate your service greatly. Your staff are very helpful when needed. I appreciate the work you are doing on behalf of our precious children!

THEY ARE ALWAYS WILLING TO HELP . THEY TOLD ME YOU CAN TRY, THIS TRY THAT. THEY ARE VERY HELPFUL ESPECIALLY WHEN IT COMES TO CHILD NEEDS.

JAMIE AND OTHER STAFF HAVE BEEN PROVIDING THE UTMOST LOVE AND CARE FOR ME AND MY SON SINCE 2019, AND I CAN'T THANK THEM ENOUGH FOR EVERYTHING THEY HAVE DONE FOR US. I SWEAR THEIR SUPPORT HAS BEEN A LIFE-CHANGING EXPERIENCE, AND I WOULDN'T CHANGE THE BOND WE ALL HAVE FOR ONE ANOTHER FOR ANYTHING IN THIS WORLD.

very family-orientated and caring

The staff is very friendly. The activities are inviting and educational.

I feel very fortunate that this was suggested to us to attend, and that there are resources like this available. I'm not sure if they had gone, but I did recommend these groups to other parents of small keiki, even if only for the benefit of creating the community connection and cultural application.

I love that we can come and go if we need to. We also love the songs that we sing during play group.

Very nice and friendly, easy to talk with

Just continue and NOT stop the program because MFSS or the HFA program are doing great with guiding families. Setting a lot of goals and also helping to achieve them with their guidance.

Cordy, Kawika, Sam, and Willy really made it to where we could understand and compare our lives in different situations. They made it easy to want to learn and fun to learn. They also made us feel comfortable to talk about our past experiences. They all made a huge impact in our lives and we are so grateful to have been able to participate in the Kamalama Program. I think it is a very important class and appreciated that it was available for me to participate in and learn how to be better parents for our children.

Messages from Stakeholders

I have learned so many things. Important parenting skills. Nurturing techniques that have built my relationship with my children.

THE HUI KANE GROUPS AND KAMALAMA GROUPS ARE HELPFUL BECAUSE THEY INFLUENCE VALUES THAT ARE SO IMPORTANT TO OUR DAILY GROWTH AS ADULTS AND PARENTS SO WE CAN BECOME BETTER ROLEMODELS FOR OUR CHILDREN.

I LOOK FORWARD TO ATTENDING ALL CLASSES BECAUSE I'M A FIRST-TIME MOM & BEING ABLE TO LEARN SO MUCH FROM DIFFERENT TYPES OF PEOPLE, FAMILIES & LIFESTYLES TEACHES ME SO MUCH

Now after starting and attending the Kamalama classes, what do you look forward to (or) may find challenging about participating in the Kamalama classes?

How to correct my daughter the best possible way when I have a hard time

What new information on Child Development and/or Brain Development did you learned this week? Please share as much as you can.

Ive I learned about survival brain and the thinking brain

Ive learned how our names connect to our ancestors. Ive also learned the difference between how the old hawaiians raised their keiki and how todays generarions raise our keiki

I look forward to learning new avenues of Hawaiian knowledge and getting others perspectives on it...

Community Partner Feedback to Celebration of Father's and Stand for Children events:

Thank you for hosting an amazing event as always. We appreciate the work you do helping fathers knowing its all about being healthy for themselves as well as their keiki.

I thought it was a well-organized, well-attended event. We met a lot of families! Great job!!!!

I loved how many kids came to the event and were excited to participate at all the booths. I also liked seeing many of the different programs.

Maui Family Support Services, Inc.

would like to give a huge MAHALO to the following donors, friends and community partners for their continued support!

Alan Guttman	Danielle Bergan	Hawaii Hotel Industry Foundation
Alice & Gerald Kimura	Danny Goya	Home Depot
Alje Edmond	Daphne Ladia	Honolu Surf Co.
Amanda Wylie	Darlyn kin Choy	Jackie Tateyama
Amy Ogilvie	David Morley	Jake Topinio
Arlene Tendo	David Schnakenberg	James W. Geiger, Esq.
Arliza Borja-Losano	Dawn McGann	Jan Shisido
Ashley Brunton	Debbie Butay	Jay Buxbaum
Audrey Winthrop	Department of Health	Jayne Galase
Baldwin High School	Department of Human Services	Jenifer Fernandez
Barbara Collier	Desiree Kawasaki Abreu	Jeny Bissell
Benedicto Larena Jr.	Desperado Orchestra	Jeri Weiss
Benjamin Hazelton	Donna Goldsmith	Jessica Gleason
Beth Holiday	Doreen Elisa	Jessica Hansen
Bobby and Elaine Lawrence	Doreen Stenson	Jill and Brian Egly
Books By the Bushel, LLC	Edel Baguio-Larena	Joanna Geller
Brandon Downs	Elaine Shaw	Joanne Pepper
Brian Cole	Eliza Castillo	John D. Crowley & Angela Crowley
Brian Connolly	Elizabeth Holiday	Jolene Guerrero
Bridget Chang	Fran Sjoberg	Jorge A. Tirona
Bruce Weyrick	Friends of the Children's Justice Center-Maui	Joycelyn M. Victorino
Burrae Jackson	Gene Frey & Debra Keitel-Frey Charitable Fund	Jude Harlan
Carol Nolan	Geri De Rego	Justina Acevedo-Cross
Casey Family Programs	Giulietta Swenson, PsyD	Kalei Kailihiwa
Charles Dalton	Glenda and Romy Baguio	Kamehameha Schools
Catherine Rice	Grace-Ann Caruso Whitney	Kate Addieg
Cathy Werner	Gregg Biehler	Kathleen Kearns
Cheryl Okuma	Hanna Pletcher	Kawika Mattos
Christen Kishel, PhD	Harriet Di Paolo	Kayla Vatsinaris
Christina Walker	Hawaii Community Foundation (HCF)	Kedron Bardwell
Christine S. Jackson	HCF-Black Fund	Keith Kuboyama
Cindy Coleman-Jacubczak	Hawaii Commission on Fatherhood	Kelly Sim
Consuelo Zobel Alger Foundation		Kendra McColloch
County of Maui		Kenneth Ikenaga
Craig McIntire-Mann		Kimberly Forney

Maui Family Support Services, Inc.

would like to give a huge MAHALO to the following donors, friends and community partners for their continued support!

Kiwanis Club of the Valley
Isle
Kristin Gomez
Ku'uipo Gonsalves Alonso
Larae Balag
Latonya Hicks
Laura Estrada
Laureta Marcucci
Laurie Tochiki
Leigh Racadio
Leinaala Bailey Cosma
Lilinoe Kauahikaua
Lisa Chau
Lisa Messano
Lisa Paulson
Lisa Souza
Loretta & William
Patterson Trustees
Manitoc Ice
Manulani Aluli Meyer
Marie Galvin
Margaret Wiedmeyer
Mark Tucker
Mary Frances McElfresh
Matilde Jacinto
Matthew Camareno
Maui Botanical Gardens
Maui United Way
Maui Food Bank
Maureen Doyle
Megan Langella
Megan McAndrews
Melissa Passarelli
Michael Cole
Michael Kim, MD
Michael Pye
Michael Victorino

Michelle Petiya-Folsom
Nancy Dossin
Nancy Nagel
Nancy Rackley
Nathaleen Parero
Nenita Pawid
Nicole Purcell
Office of Hawaiian Affairs
Orla Langan Jones
Pam Harris
Parents and Children
Together
Patricia Ryan-Krause
Paul Hadik
Paul Tonnessen
Paula Darnell
Punahale Hoopii
Rachelle Nam
RBTI Books-Friends in
Hawaii
Renee Lavoie
Robert Emens
Robert Kyle
Robin Dickson
Roger Osten
Samuel N & Mary Castle
Foundation
Scott Strader
Shawn Melamed
Shelley De Contreras
Shelley Tellez
Shelly Brown
Shirley Lam
Steve E. Clark, MD
Sondra Horowitz
State of Hawaii-
Department of Health

Tammy Ruiz
Tanya Minto
Teresa Garcia
Tess Kirk
The Fredd & Marjorie
Isaksen Family
Foundation, Inc.
The Sandalman
Timothy O'Brien
Todd Ikenaga
Tricia Gouveia
Tunberry Beadery, LLC
Valerie Gillis
Waikapu Publishing
Company
William Stocker
Zenneth Ira Rhee
Zina Andrade





Maui Family Support Services, Inc.
1844 Wili Pa Loop
Wailuku, HI 96793



Help MFSS strengthen children and families in Maui County!

WAYS YOU CAN DONATE

- With a Memorial Gift
 - Honor the memory of a friend or loved one
- With Planned Giving
 - Donate stock, mutual funds or real estate
 - Contact Debbie Butay at 808-242-0900
- With Goods or Services
 - Donate toward one of our yearly events
 - Contact Zina Andrade at 808-242-0900
- With a Monetary Gift
 - Return this form with your check to the address above, or
 - Donate online at WWW.MFSS.ORG/DONATE